

# Standardize Your Research Data with the NIH Common Data Element Repository

October 18, 2023

National Library of Medicine

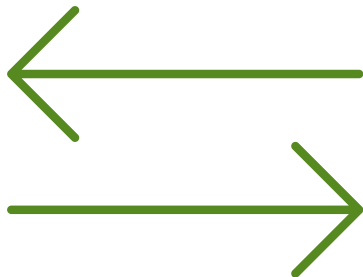


National Library of Medicine

# CDEs and the NIH

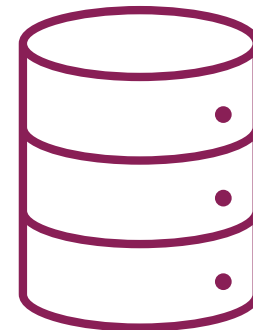
## CDEs...

- Make data interoperable and support FAIR principles



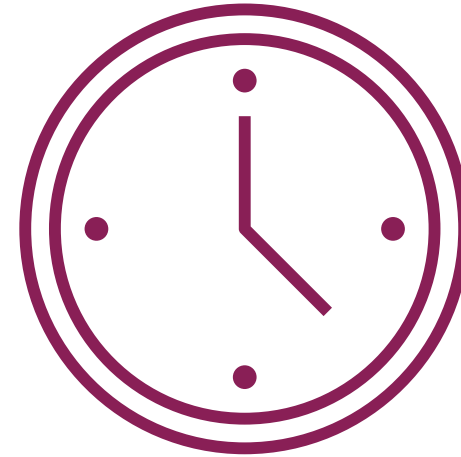
## CDEs...

- Support the NLM Strategic Plan for 2017-2027, the NIH Strategic Plan for Data Science, and the NIH Data Management and Sharing Policy



# Agenda

- Defining CDEs and the CDE-R
- Preparing to search
- Locating CDEs in the CDE-R
- Saving CDEs for later
- How to get help



# Common Data Elements (CDEs) Definition

**Common Data Elements (CDEs)** are standardized, precisely defined questions paired with a set of specific allowable responses, used systematically across different sites, studies, or clinical trials to ensure consistent data collection.

# Example: Usual Place of Health Care Type

- **Standardized, precisely defined question:** “Is there a place that you USUALLY go to when you are sick or need advice about your health? Select all that apply.”
- **Specific allowable responses:**

A doctor’s office or community health center	Walk-in clinic, urgent care center, or retail clinic in a pharmacy store or grocery store
Emergency room	A VA Medical Center or VA outpatient clinic
Some other place	There is NO place
Don’t know	Refused/Not reported
Unknown	

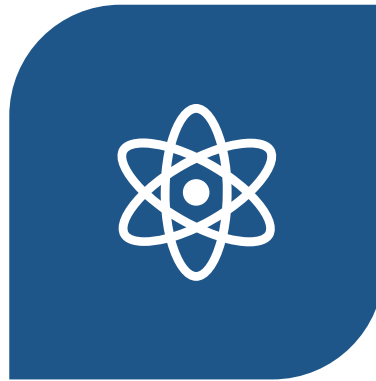
# Example: Date of Chest Examination

- **Standardized precisely defined question:** “What was the date of the imaging examination?”
- **Specific allowable response:** Date

# Use CDEs to . . .



**SAVE RESOURCES**

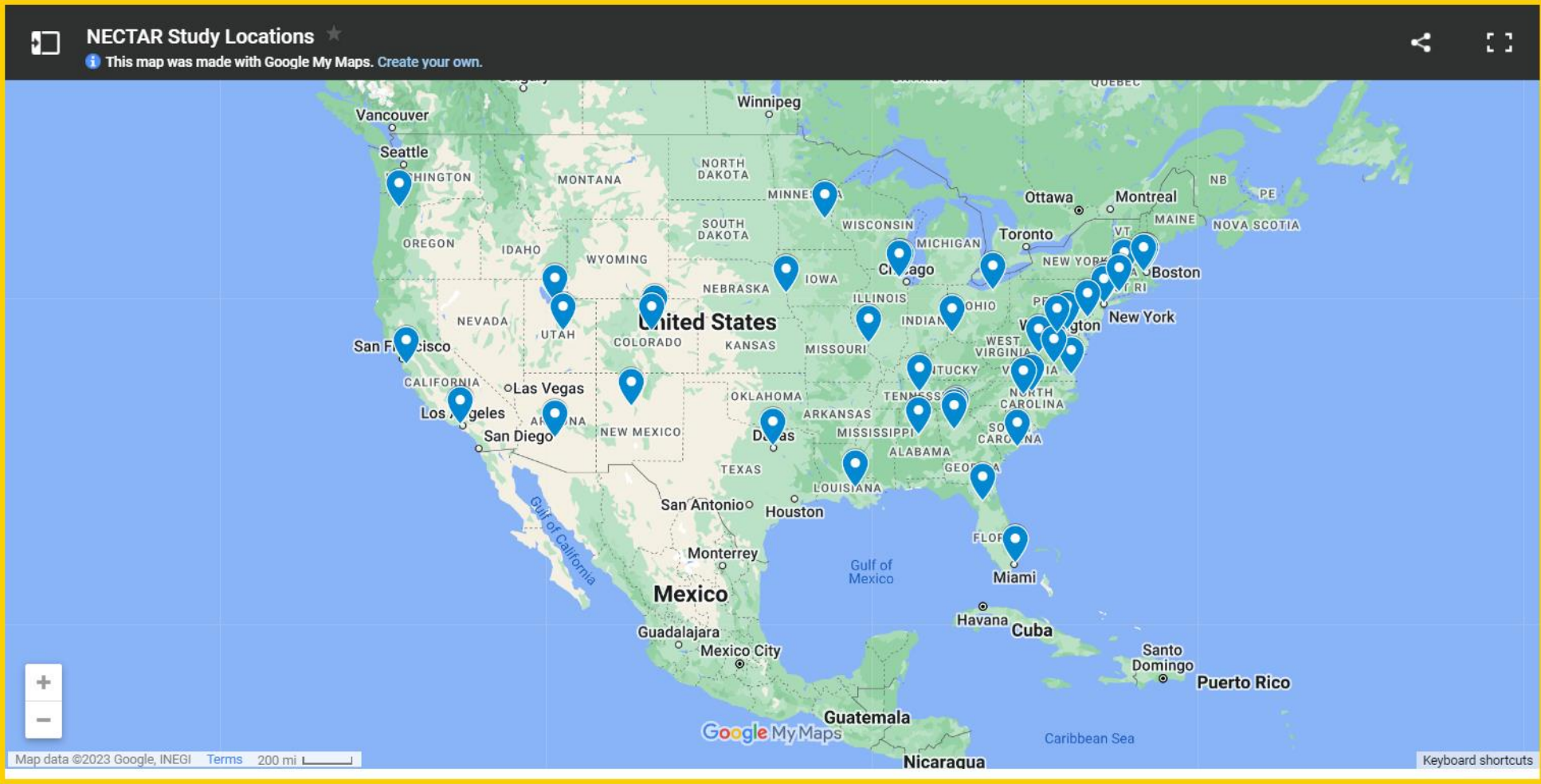


**ADVANCE SCIENCE**



**FOLLOW POLICIES**

# NHLBI CONNECTS





# The NIH CDE Repository (CDE-R)

- CDEs recommended or required by NIH ICs or other organizations
- Reviewed by NIH CDE governance committee, in partnership with NIH CDE Repository Team



# NIH-Endorsed CDEs Criteria



- ✓ Clear definition of variable and measure with prompt and response
- ✓ Documented evidence of reliability and validity
- ✓ Human- and machine-readable format preferred
- ✓ Recommended/designated by a recognized NIH body (IC, committee, etc)
- ✓ Licensing and IP status clear (prefer CC-by or open source)

# Form Definition

A **form** is a group of questions or variables with specified sets of allowable responses that are used as a set for particular research or clinical reasons.

# Example: Audit-C Questionnaire

## 1. How often do you have a drink containing alcohol?

- Two to Three Instance Per Week
- Two to Four Instance Per Month
- Four or Greater Instance Per Week
- Monthly or less
- Never

## 2. How many standard drinks containing alcohol do you have on a typical day?

- 1 or 2
- 10 or more
- 3 to 4
- 5 to 6
- 7 to 9

## 3. How often do you have six or more drinks on one occasion?

- Two To Three Instance Per Week
- Two to Four Instance Per Month
- Four or Greater Instance Per Week
- Less Than Monthly
- Monthly
- Daily
- Never
- Weekly

# Bundles definition

A **bundle** is a form that is indivisible and individual CDEs pulled from them are not considered valid.

**!** **This form is a bundle.** Bundles are indivisible. They are not considered valid and reliable if not used in their entirety, as intended.

**!** **This CDE is part of a bundle.** All CDEs within a bundle must be used together. Go to [bundle](#)

# Review

5. Find CDEs, Forms, and Bundles in the CDE-R

6. Endorsed CDEs have been reviewed and approved by the NIH.

7. In the CDE-R, a bundle is a form that is indivisible and individual CDEs pulled from them are not considered valid.

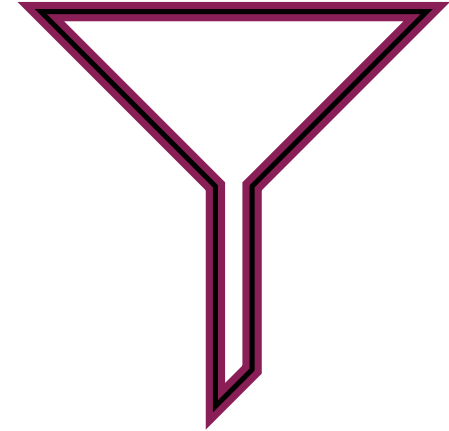
# Exercise #1

- Search within the NIH-Endorsed collection for a CDE that collects employment status of the respondent
- Put in the chat one of the permissible values for this CDE



# How to Narrow Your Results

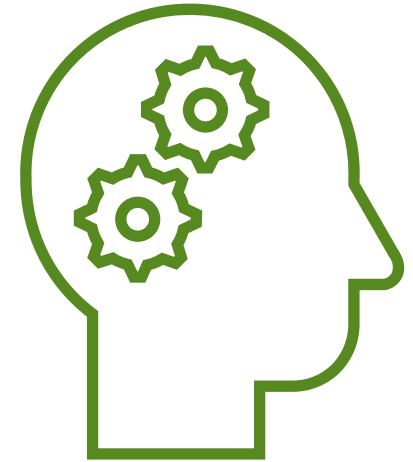
- Limit to NIH-Endorsed CDEs
- Limit to a specific Collection
- Limit to Standard under Registration Type
- Add additional terms to your search





# Exercise #2

- Locate the Clinical Decision Support for Substance Abuse form from NIDA
- Copy and paste its copyright status into the chat.

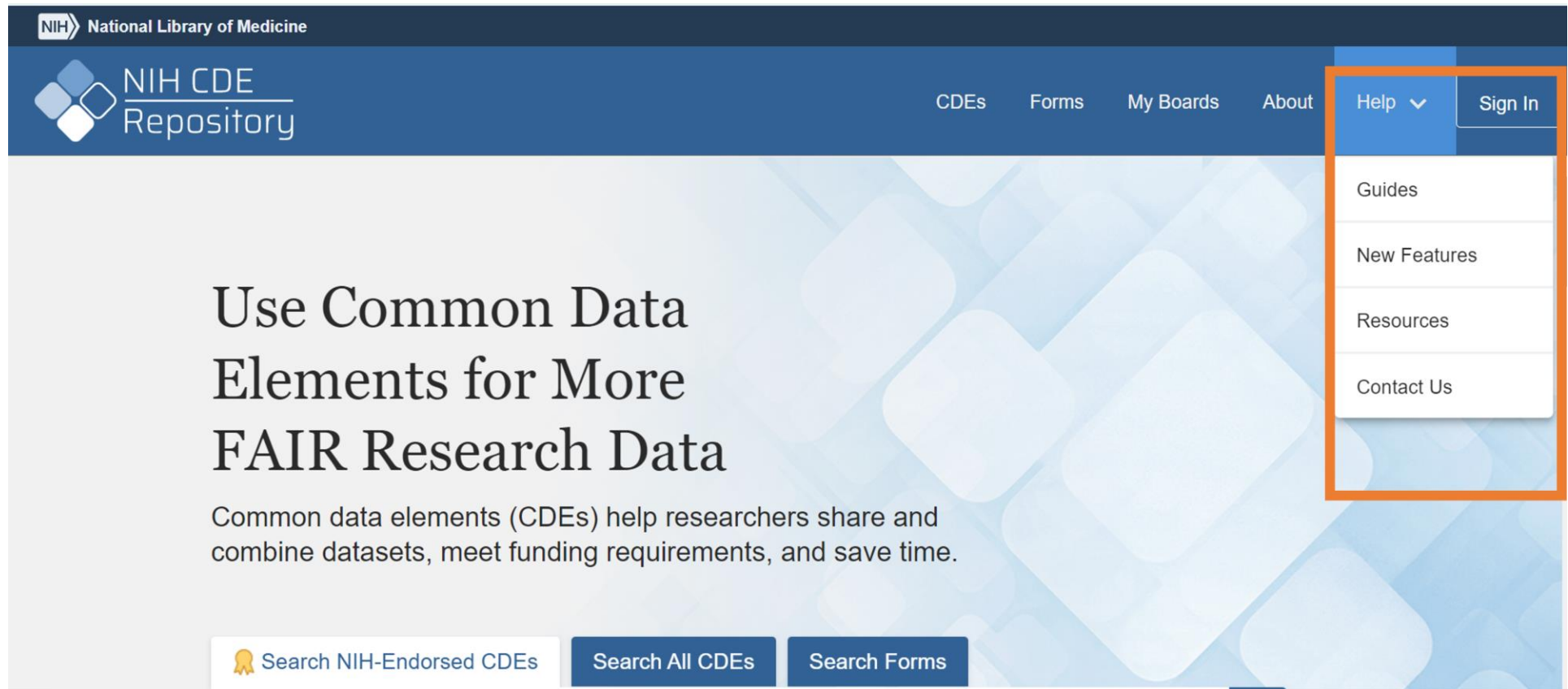


# Exercise #3: Browsing CDEs

- What is the name of one NEI CDE collection that you can browse in the Repository? Tell me in the chat.



# How to Get Help



The screenshot shows the NIH CDE Repository website. The top navigation bar includes the NIH logo, the text "National Library of Medicine", and the "NIH CDE Repository" logo. To the right of the logo are links for "CDEs", "Forms", "My Boards", and "About". A "Help" dropdown menu is open, showing options for "Guides", "New Features", "Resources", and "Contact Us". A "Sign In" button is also visible. The main content area features a large heading: "Use Common Data Elements for More FAIR Research Data". Below this heading is a paragraph: "Common data elements (CDEs) help researchers share and combine datasets, meet funding requirements, and save time." At the bottom of the page, there are three search buttons: "Search NIH-Endorsed CDEs" (with a person icon), "Search All CDEs", and "Search Forms".

NIH National Library of Medicine

NIH CDE Repository

CDEs Forms My Boards About Help Sign In

Help

- Guides
- New Features
- Resources
- Contact Us

## Use Common Data Elements for More FAIR Research Data

Common data elements (CDEs) help researchers share and combine datasets, meet funding requirements, and save time.

Search NIH-Endorsed CDEs Search All CDEs Search Forms