



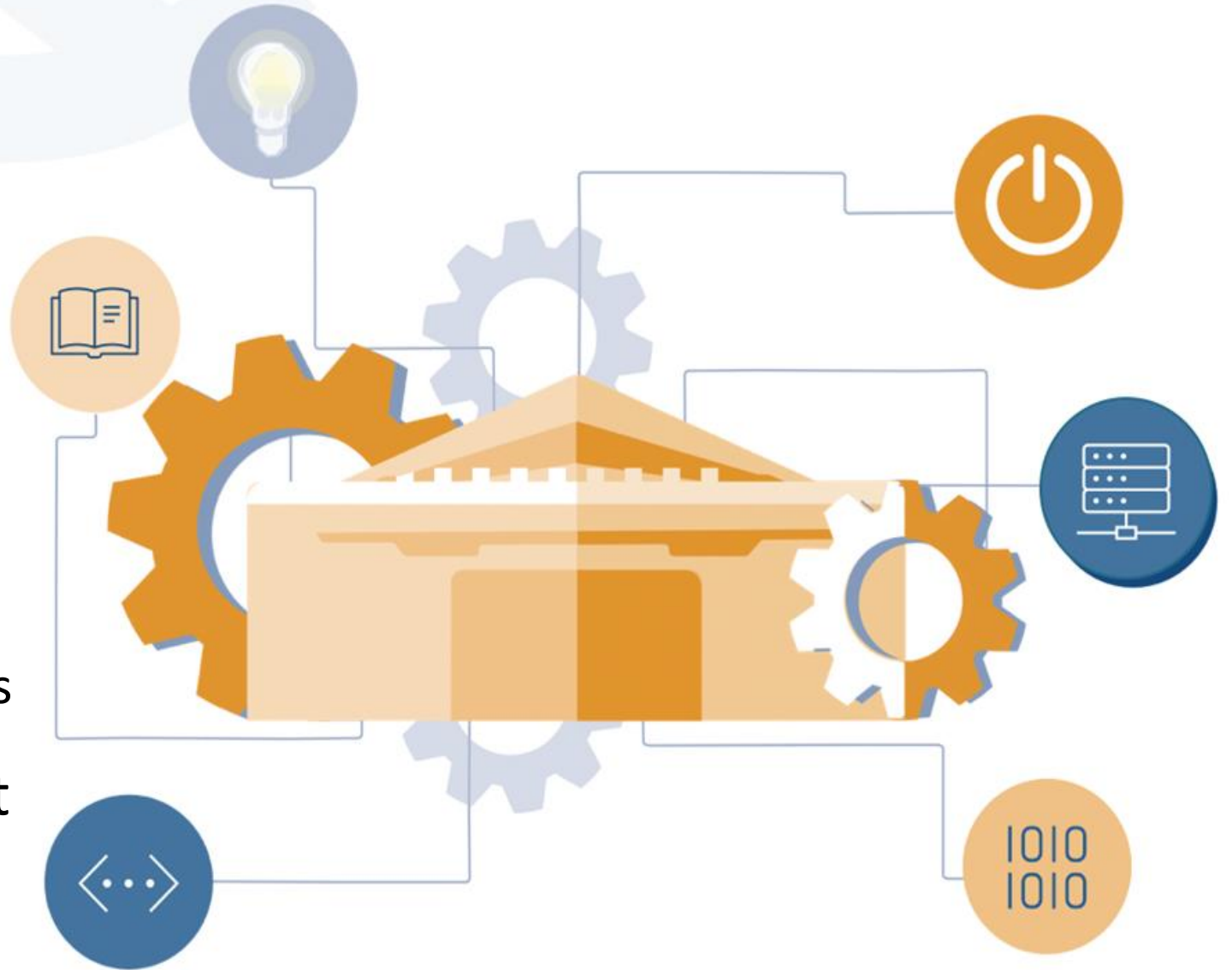
NLM Office Hours: Special Listening Session

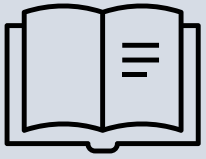
January 18, 2023

Agenda

Topics:

- Process Review
 - Highlights of 2023 MeSH Changes
 - MeSH Production Process
- Customer Engagement





Welcome

Dianne Babski

*Associate Director, Library Operations
National Library of Medicine*



Why we are here and why MeSH vocabulary matters





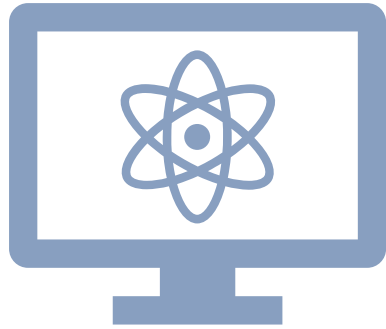
Process Review

Dan-Sung Cho

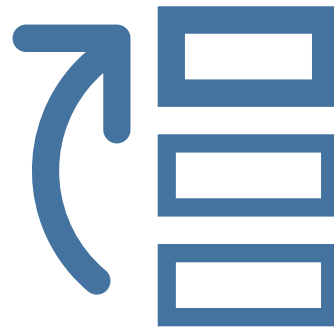
*Content Lead & Project Coordinator, MeSH
National Library of Medicine*



Where MeSH changes come from:



The literature
and evolving
science



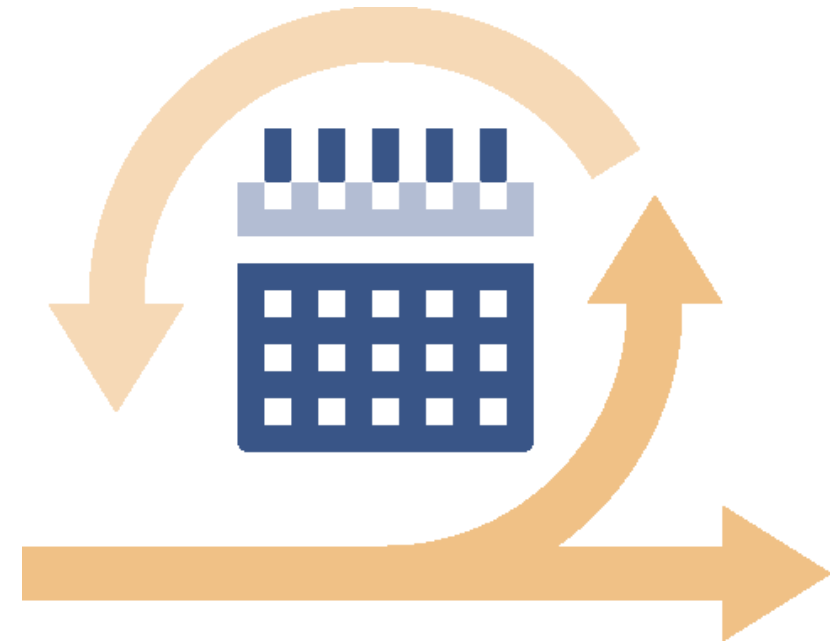
NIH/HHS
priorities



Users via
MeSH
Suggestions

Component Update Cycles

- Major heading (MH) descriptors and subheadings (SH) are updated or released **annually**
- Supplementary Concept Records (SCRs) are created **daily** and distributed nightly Monday through Thursday
- Users access MeSH data using web interfaces or receiving downloadable data sets in XML, ASCII, MARC 21, and RDF from the NLM Data Distribution Program



Review Process Principle

- 700 annual submissions
- Seven review meetings throughout the annual MeSH production cycle
- Review feedback and requests
- Each MeSH request is assigned to a staff member, who drafts recommendations for review by the MeSH Team



Do We Need It?

Does it have high posting in PubMed?

- 100 or more occurrences in **titles** of MEDLINE-indexed articles, *or*
- 20 or more recent occurrences in the last 5-10 years **and** significantly increasing
- Not a fad—multiple occurrences in recent years
- Not only in one journal or by a single set of authors
- Not only in a restricted, narrow field
- High for a commonly occurring disease



Other Updates to MeSH terms

MeSH works on special projects to harmonize data and represent underserved domains.

Recent Projects:

- Office of Rare Disease Research (ORDR)
- Medicinal Plants
- NCBI Taxonomy
- Social Determinants of Health (SDOH)
- Per- and Polyfluoroalkyl Substances (PFAS)
- Ethnic Minorities

Outstanding Projects:

- Population Minority
- Patient-Reported Outcome Measures (PROMs)
- Anatomy
- Brain Research Through Advancing Innovative Neurotechnologies[®] (BRAIN)
- Chemical Abstracts Service (CAS)
- Space Medicine
- Other Term [OT]



Highlights of 2023 MeSH Changes

- Promoted term: Long COVID to Post-Acute COVID-19 Syndrome
- Re-structuring and re-naming to keep up with science
 - Example: "Lactobacillus salivarius" changed to "Ligilactobacillus salivarius"
 - Example: Adjustments under "Aneurysm"
- New and revised terms for Population Groups
- New terms for 1,700+ tribal nations and ethnic communities

For more detailed information, see the [recording of the 2023 MeSH Highlights webinar](#)



2023 MeSH Population Groups

- African People +
- Asian People +
- Black People +
- Caribbean People +
- Central American People +
- European People +
- Middle Eastern and North Africans +
- North American People +
- Oceanians +
- South American People +
- White People+



MeSH Addition of Minority Terms

Early Inclusion of Broad Spectrum of Subject Matter Experts (SMEs):

- NIH scientists and researchers
- Librarians (NNLM)
- Scientists and Researchers outside

Term Selection:

- Primary Sources: Trusted/Familiar Sources
 - State Department
 - Census Bureau
 - Bureau of Indian Affairs (BIA)
- Exclusion of terms: derogatory, caste, etc.
- Adoption of “people” ending
- Inclusion of self-described terms



Ethnic Minority per Continents

Continent	# Type 5 SCR
Africa	438
Asia	349
Australia (Oceania)	48
Europe	129
North America	798
South America	42
Antarctica	0
Total (some terms have multiple HM)	1804

Australian Aboriginal and Torres Strait Islander Peoples



Request was made by
the Australian Library
& Australian
Indigenous
Communities via
Journal of Health
Information and
Libraries Australasia
(JHILA)

MeSH and Australian Indigenous Communities

The Australian Library & Australian Indigenous Communities urge the U.S. National Library of Medicine to update their MeSH term to reflect the Australian Indigenous population.

(National Library of Medicine response is included at the end of this article).

Australian Aboriginal and Torres Strait Islander Peoples


The two groups of indigenous aboriginal peoples of Australia. They include Aboriginal Australians and Torres Strait Islanders. These are two distinct peoples with unique histories, languages, cultural practices and spiritual beliefs.

Year introduced: 2023

What's New in MeSH: Changes to MeSH in Progress

NIH National Library of Medicine

PRODUCTS AND SERVICES ▾ RESOURCES FOR YOU ▾ EXPLORE NLM ▾ GRANTS AND RESEARCH ▾

 Medical Subject Headings [MeSH Home](#) | [Learn About MeSH](#) | [MeSH Browser](#) | [Download MeSH Data](#) | [MeSH on Demand](#) | [Suggestions](#)

[Home](#)

What's New in MeSH

Changes to MeSH Terminology for 2024 (in Progress)

Ailanthus	Dental Staff	Intestinal Barrier Function
2019-nCoV Vaccine mRNA-1273	Dentistry, Operative	Ixodes
Alert Fatigue, Health Personnel	Dexmedetomidine	Lysosomal Membrane Proteins
Anthralin	Diet, Plant-Based	Medecins Sans Frontieres
Axonemal Dyneins	Dietary Approaches To Stop Hypertension	Medicalization
Bacterial Lysates	Dietary Patterns	Melanogenesis
Basement Membrane	Disaster Nursing	Melioidosis
Biocuration	Disaster Planning	Mental Health Teletherapy
Blue Light	Distance Counseling	Microphysiological Systems
BNT162 Vaccine	DOM 2,5-Dimethoxy-4-Methylamphetamine	Multiomics
Bulk Drugs	Endovascular Aneurysm Repair	Nicotine Replacement Therapy
Cell Atlases as Topic	Epithelial-Mesenchymal Transition	Niemann-Pick Diseases
Centenarians	Erythrocytes	Olivary Degeneration
Centrosome	Fluoridation	Olivary Nucleus
Cognitive Reflection	Granulocyte Colony-Stimulating Factor	Open Waste Burning
Comic Books	Histiocytosis, Langerhans-Cell	Persian Gulf Syndrome
Complex Regional Pain Syndromes	Immune System Exhaustion	Pfizer-BioNTech COVID-19 Vaccine, Bivalent
Continuous Glucose Monitoring	Immunoinformatics	Phase Separation
Dashboard Systems	Inferior Olivary Complex	Photomechanical Print
Delayed Health Care	Influenza A H3N2, Variant Virus	Physical Distancing
		Physician Engagement

Submit Suggestions to MeSH

- [Guidelines for submitting suggestions](#) are available
- Suggestions should be submitted through the [NLM Help Desk](#)

Write to the Help Desk

Subject *

First Name *

Last Name *

Email Address *

Description: (Please include the NLM Product or Service you are writing about.) *

Styles | Format | **B** *I* **S** | *I*_x | ¶ | ☰ |

✂ | 📄 | 📁 | 📁 | 📁 | ⬅ | ➡ | 📧 | 🗨



We want to hear from
you!

Thank you!

