



## Table of Contents

### **My NCBI to Replace eRA Commons for Bibliography Management - e1**

July 01, 2010 [posted]

### **Funding Support Web Page Revised - e2**

July 01, 2010 [posted]

### **MedlinePlus® and MedlinePlus en español Redesign - e3**

July 16, 2010 [posted]

### **New NLM® Web Site Sponsored by the US Food and Drug Administration (FDA) Now Available - e4**

July 20, 2010 [posted]

### **New URLs for Some PubMed® Web Pages - e5**

July 20, 2010 [posted]

### **Meeting Abstracts Added to the NLM Gateway - e6**

July 23, 2010 [posted]

### **NLM® Technical Bulletin E-mail Subscription Service - e7**

July 27, 2010 [posted]

### **NLM® Household Products Database Now Includes 10,000 Brand Name Products - e8**

July 27, 2010 [posted]

### **Unified Medical Language System® (UMLS®) News: Revised License Agreement, New UMLS Terminology Services and Browser, Discontinued UMLSKS, and API Changes - e9**

July 29, 2010 [posted]

### **NLM® Resource Update: WISER® for BlackBerry - e10**

August 05, 2010 [posted]

### **Structured Abstracts: A New Look for the PubMed® Abstract Display - e11**

August 06, 2010 [posted]

August 16, 2010 [Editor's note added]

### **NLM® Resource Update: TOXMAP® Now Includes Updated Superfund, Mortality Data, and New Classroom Exercises - e12**

August 09, 2010 [posted]

### **MEDLINE® Character Set Expansion - e13**

August 25, 2010 [posted]

Issue Completed August 26, 2010

<a href="#">Stay Current</a> 	<b>2010 JULY–AUGUST</b>	<b>No. 375</b>	<a href="#">Home</a>	<a href="#">Back Issues</a>	<a href="#">NEXT</a> <a href="#">Indexes</a>
--	-------------------------	----------------	----------------------	-----------------------------	---

U.S. National Library of Medicine, 8600 Rockville Pike, Bethesda, MD 20894  
National Institutes of Health, Department of Health & Human Services  
Copyright, Privacy, Accessibility  
Freedom of Information Act (FOIA)  
Last updated: 26 August 2010



July 01, 2010 [posted]

## My NCBI to Replace eRA Commons for Bibliography Management

The NIH Public Access Policy ensures that the public has access to the published results of NIH funded research. It requires scientists to submit NIH-funded peer-reviewed journal manuscripts to PubMed Central® upon acceptance for publication.

In order to maintain compliance with the NIH Public Access Policy, NIH program directors (PDs) and principal investigators (PIs) registered in eRA Commons must soon manage their professional bibliographies using the My Bibliography feature in My NCBI. As of July 23, 2010, PD/PIs will be unable to enter citations manually into eRA Commons and must use My Bibliography.

For detailed information, see:

- NIH announcement, *My NCBI Tool to Replace eRA Commons for Bibliography Management*
- NLM Technical Bulletin article, *My NCBI: Managing Compliance with the NIH Public Access Policy Using My Bibliography*

**By Barton W. Trawick**  
**National Center for Biotechnology Information**

---

*Trawick BW. My NCBI to Replace eRA Commons for Bibliography Management. NLM Tech Bull. 2010 Jul-Aug;(375):e1.*



# NLM Technical Bulletin

National Library of Medicine | National Institutes of Health

<a href="#">Table of Contents</a>	<a href="#">RSS</a>	<a href="#">Home</a>	<a href="#">Back Issues</a>	<a href="#">Indexes</a>
<b>2010 JULY–AUGUST</b>	<b>No. 375</b>			

July 01, 2010 [posted]

## Funding Support Web Page Revised

The National Library of Medicine® updated its electronic resource that explains the various research funding support tags that are searchable in PubMed®.

---

*Funding Support Web Page Revised. NLM Tech Bull. 2010 Jul-Aug;(375):e2.*

<a href="#">PREVIOUS</a>	<b>2010 JULY–AUGUST</b>	<b>No. 375</b>	<a href="#">NEXT</a>	
<a href="#">Stay Current </a>		<a href="#">Home</a>	<a href="#">Back Issues</a>	<a href="#">Indexes</a>

U.S. National Library of Medicine, 8600 Rockville Pike, Bethesda, MD 20894  
National Institutes of Health, Department of Health & Human Services  
Copyright, Privacy, Accessibility  
Freedom of Information Act (FOIA)



July 16, 2010 [posted]

## MedlinePlus® and MedlinePlus en español Redesign

On July 14, 2010, the National Library of Medicine® (NLM®) released a redesigned version of MedlinePlus and MedlinePlus en español.

The goals for this redesign were to incorporate suggestions received from users and to update the graphic design, layout, and site architecture for an improved user experience. Here are the highlights of the redesign:

- New homepage features make it easier to find frequently used content
- Navigation simplifies access to Health Topics, Drugs & Supplements, and Videos & Cool Tools
- Updated page designs give the site a vibrant look and feel
- A new MedlinePlus logo provides a consistent look across Mobile MedlinePlus, the @medlineplus4you Twitter™ feed, MedlinePlus e-mail updates and the full MedlinePlus Web site (see Figure 1)
- Web 2.0 technologies help users share content
- Distinctive color schemes identify English and Spanish pages

The redesigned site contains all of the same reliable health information that users could find on the former version of the site, but in an enhanced user experience.

The homepages have been restructured, making it easier to find the content visitors use most (see Figures 1 and 2). New features include:

- A rotating feature at the top of the page that highlights current interest topics and new content on MedlinePlus
- "About Your Health" boxes, which link to popular MedlinePlus health topic pages
- A Medical Dictionary search box
- The MedlinePlus search cloud widget, plus an embeddable version that anyone can add to his or her own site
- An e-mail updates sign up box so users can receive customized MedlinePlus updates

- 1
- 2
- 3
- 4

## Stay Healthy At Any Age

Learn how to keep yourself and your family healthy. Visit the MedlinePlus [Healthy Living](#) page for diet, exercise and prevention tips for people of all ages.



→ Health Topics

→ Drugs & Supplements

→ Videos & Cool Tools

**MEDICAL DICTIONARY**  
 **GO**

### POPULAR SEARCHES

anemia **asthma** blood pressure **copd**  
**diabetes**  
fibromyalgia **gout**  
hypertension **lupus**  
mrsa omeprazole  
pneumonia stroke thyroid

[Share this widget](#) [See more](#)

### FEATURED SITE



Seasonal allergies getting you down? The MedlinePlus [Allergy](#) page has lots of great tips.

### About Your Health

**General** Seniors Men Women Children

[Back Pain](#)  
[COPD \(Chronic Obstructive Pulmonary Disease\)](#)  
[Depression](#)  
[Diabetes](#)  
[Exercise and Physical Fitness](#)  
[Heart Diseases](#)  
[High Blood Pressure](#)  
[Pregnancy](#)  
[Skin Conditions](#)  
[Weight Control](#)

**NIHSeniorHealth** Clinical Trials

Visit [NIHSeniorHealth.gov](#) - Easy-to-Use Health and Wellness Information for Older Adults →



[Directories](#) [Organizations](#) [Medical Encyclopedia](#)

**16 JUN** Health News

[40-Year-Old Gout Drug Shows Promise Against Angina](#)  
[Female Caregivers Face A Heavier Toll: Study](#)  
[Many Americans Sleep-Deprived: Study](#)  
[more health news](#)



### E-mail Updates

Get updates on your favorite Health Topics.

Enter e-mail address  **GO**

**MAGAZINE**

**EASY TO READ**

**MULTIPLE LANGUAGES**



[Mobile version](#) [Get email updates](#) [Subscribe to RSS](#) [Follow us on Twitter](#)

[Disclaimers](#) [Copyright](#) [Privacy](#) [Accessibility](#) [Quality Guidelines](#)

[U.S. National Library of Medicine](#) 8600 Rockville Pike, Bethesda, MD 20894 [U.S. Department of Health and Human Services](#) [National Institutes of Health](#) [FOIA](#) [USA.gov](#)

Page last updated on June 08 2010 URL for this page: <http://medlineplus.gov>

**Figure 1: Redesigned MedlinePlus homepage.**



Figure 2: Redesigned MedlinePlus en español homepage.

The redesigned health topics pages include a Share button, which allows users to post a link to a specific topic page on social networks using the Web 2.0 AddThis© technology. The enhanced visual emphasis on the health topic summary, Start Here links, and the encyclopedia links guide users to helpful content (see Figure 3).



## Heart Diseases

Also called: Cardiac Diseases

If you're like most people, you think that heart disease is a problem for other folks. But heart disease is the number one killer in the U.S. It is also a major cause of disability. There are many different forms of heart disease. The most common cause of heart disease is narrowing or blockage of the coronary arteries, the blood vessels that supply blood to the heart itself. This is called [coronary artery disease](#) and happens slowly over time. It's the major reason people have [heart attacks](#).

Other kinds of heart problems may happen to the [valves](#) in the heart, or the heart may not pump well and cause [heart failure](#). Some people are [born](#) with heart disease.

You can help reduce your risk of heart disease by taking steps to control factors that put you at greater risk:

- Control your [blood pressure](#)
- Lower your [cholesterol](#)
- Don't smoke
- Get enough exercise

NIH: National Heart, Lung, and Blood Institute

Get Heart Diseases updates by email

GO

What's this?

### Start Here

- [Heart Disease](#) (Centers for Disease Control and Prevention)
- [Heart Disease Risk Questionnaire](#) (Siteman Cancer Center)  
Also available in [Spanish](#)
- [Your Guide to Living Well with Heart Disease](#) NIH (National Heart, Lung, and Blood Institute)

### Basics

[Overviews](#)  
[Latest News](#)  
[Diagnosis/Symptoms](#)  
[Treatment](#)  
[Prevention/Screening](#)

### Learn More

[Rehabilitation/Recovery](#)  
[Coping](#)  
[Specific Conditions](#)  
[Related Issues](#)

### Multimedia & Cool Tools

[Health Check Tools](#)  
[Tutorials](#)  
[Videos](#)  
[Games](#)

### Research

[Anatomy/Physiology](#)  
[Financial Issues](#)  
[Clinical Trials](#)  
[Genetics](#)  
[Research](#)  
[Journal Articles](#)

### Reference Shelf

[Dictionaries/Glossaries](#)  
[Directories](#)  
[Organizations](#)  
[Statistics](#)

### For You

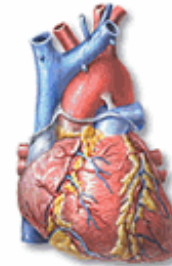
[Children](#)  
[Men](#)  
[Women](#)  
[Seniors](#)  
[Patient Handouts](#)

### Overviews

- [Heart and Vascular Diseases](#) NIH (National Heart, Lung, and Blood Institute)
- [Heart Disease](#) (Mayo Foundation for Medical Education and Research)

### Latest News

- [Mediterranean Diet Helps Existing Heart Disease, Too](#) (06/03/2010, Reuters Health)
- [Toothbrushing May Stave Off Heart Woes](#) (05/27/2010, HealthDay)
- [Heart Disease Among Childhood Cancer Survivors Tied to Gene Mutations](#) (05/21/2010, HealthDay)
- [Helpful Heart Test?](#) (05/07/2010, HealthDay)



©ADAM

### MEDICAL ENCYCLOPEDIA

- [Aging changes in the heart and blood vessels](#)
- [Aspirin and heart disease](#)
- [Atrial myxoma](#)
- [Being active when you have heart disease](#)
- [C-reactive protein](#)
- [Cardiac amyloidosis](#)
- [Cardiac catheterization](#)
- [Cardiac catheterization - discharge](#)
- [Cardiac tamponade](#)
- [Cardiovascular system](#)



### Related Topics

- [Angina](#)
- [Arrhythmia](#)
- [Cardiac Arrest](#)
- [Cardiomyopathy](#)
- [Coronary Artery Disease](#)
- [Endocarditis](#)
- [Heart Attack](#)
- [Heart Diseases—Prevention](#)
- [Heart Failure](#)
- [Heart Surgery](#)
- [Heart Valve Diseases](#)
- [Blood, Heart and Circulation](#)
- [Seniors](#)

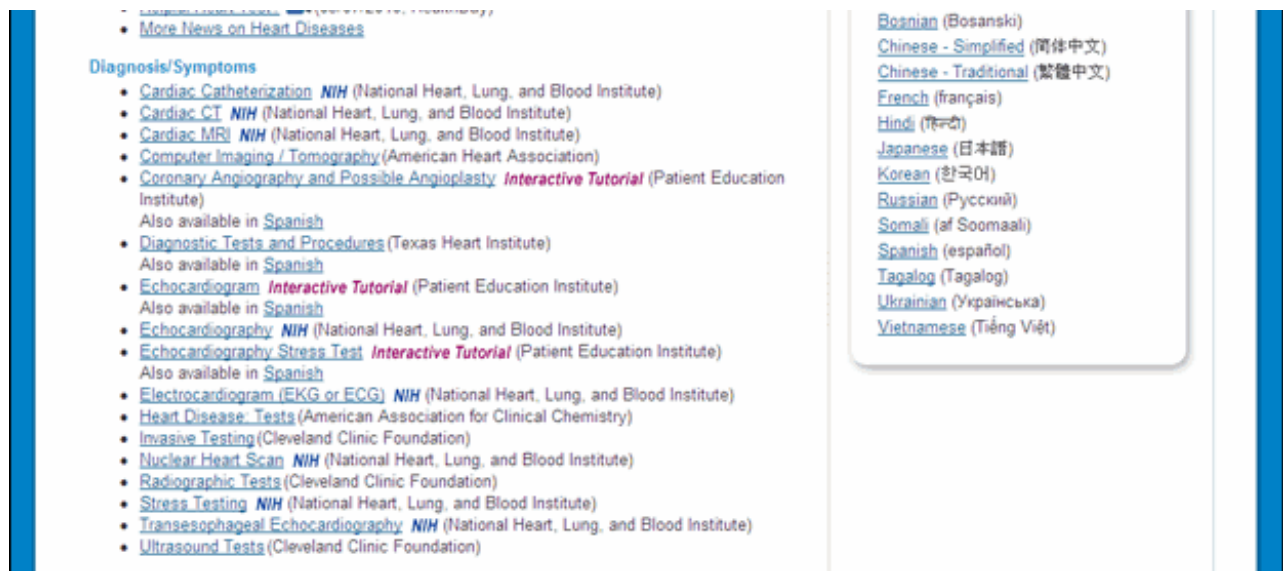
### National Institutes of Health

The primary NIH organization for research on [Heart Diseases](#) is the [National Heart, Lung, and Blood Institute](#)

### Languages

[Arabic \(العربية\)](#)





**Figure 3: Redesigned MedlinePlus health topic page.**

The Videos & Cool Tools page (see Figure 4) is a new page that brings together:

- anatomy, surgery and news videos
- interactive tutorials
- health calculators
- quizzes and games

A new search box allows users to search all MedlinePlus videos and tutorials, without having to search the entire site. The page also links to the MedlinePlus resources:

- Understanding Medical Words
- Evaluating Health Information



**Figure 4: New MedlinePlus Videos & Cool Tools page.**

The MedlinePlus redesign is the culmination of user feedback, formal usability testing, information architecture analysis and graphic design improvements. The MedlinePlus team welcomes your feedback via the Contact Us link at the top of each page of the site.

**By Linda Ferguson  
Public Services Division  
and  
Jennifer Jentsch  
Public Services Division**

*Ferguson L, Jentsch J. MedlinePlus® and MedlinePlus en español Redesign. NLM Tech Bull. 2010 Jul-Aug;(375):e3.*

U.S. National Library of Medicine, 8600 Rockville Pike, Bethesda, MD 20894  
National Institutes of Health, Department of Health & Human Services  
Copyright, Privacy, Accessibility  
Freedom of Information Act (FOIA)



# NLM Technical Bulletin

National Library of Medicine | National Institutes of Health

[Table of Contents](#)

[RSS](#)

[Home](#)

[Back Issues](#)

[Indexes](#)

2010 JULY–AUGUST

No. 375

July 20, 2010 [posted]

## New NLM® Web Site Sponsored by the US Food and Drug Administration (FDA) Now Available

*[Editor's Note: This is a reprint of an announcement published on NLM-Tox-Enviro-Health-L, an e-mail announcement list available from the NLM Division of Specialized Information Services. To subscribe to this list, please see the NLM-TOX-ENVIRO-HEALTH-L Join, Leave, or Change Options page.]*

A new Web site sponsored by the US Food and Drug Administration (FDA) is now available.

This database provides access to the FDA Unique Ingredient Identifier (UNII) assigned to substances by the FDA Substance Registration System.

The UNII is an essential element required for the listing of substances in the FDA Structured Product Labeling (SPL). The Division of Specialized Information Services (SIS) of the National Library of Medicine® (NLM) and the FDA collaborated to make access to this code easier.

Users entering a substance name or a UNII will be directed to the FDA record. Spell checking and autosuggest are available for each query. If no UNII is available for a substance, the user is referred to the FDA to request one.

Links to the NLM ChemIDplus and the Drug Information Portal are provided for most drugs. The database is updated weekly with data provided by FDA.

---

*New NLM® Web Site Sponsored by the US Food and Drug Administration (FDA) Now Available. NLM Tech Bull. 2010 Jul-Aug;(375):e4.*

[PREVIOUS](#)

2010 JULY–AUGUST

No. 375

[NEXT](#)

[Stay Current](#) 

[Home](#)

[Back Issues](#)

[Indexes](#)

U.S. National Library of Medicine, 8600 Rockville Pike, Bethesda, MD 20894  
National Institutes of Health, Department of Health & Human Services  
Copyright, Privacy, Accessibility  
Freedom of Information Act (FOIA)



# NLM Technical Bulletin

National Library of Medicine | National Institutes of Health

<a href="#">Table of Contents</a>	<a href="#">RSS</a>	<a href="#">Home</a>	<a href="#">Back Issues</a>	<a href="#">Indexes</a>
2010 JULY–AUGUST	No. 375			

July 20, 2010 [posted]

## New URLs for Some PubMed® Web Pages

The URLs for these PubMed Web pages have been streamlined. The old URLs will be redirected to the new URLs so existing links should work. We recommend that you update your documentation and Web pages with the new URLs to avoid problems in the future. LinkOut libraries should also update specialized Single Citation Matcher and Clinical Queries URLs; please see the LinkOut Help for details. The links on the PubMed homepage have been updated.

- Single Citation Matcher  
<http://www.ncbi.nlm.nih.gov/pubmed/citmatch>
- Batch Citation Matcher  
<http://www.ncbi.nlm.nih.gov/pubmed/batchcitmatch>
- Clinical Queries  
<http://www.ncbi.nlm.nih.gov/pubmed/clinical>

**By Kathi Canese**  
**National Center for Biotechnology Information**

*Canese K. New URLs for Some PubMed® Web Pages. NLM Tech Bull. 2010 Jul-Aug;(375):e5.*

<a href="#">PREVIOUS</a>	2010 JULY–AUGUST	No. 375		
<a href="#">Stay Current</a>			<a href="#">Home</a>	<a href="#">Back Issues</a>
				<a href="#">Indexes</a>

U.S. National Library of Medicine, 8600 Rockville Pike, Bethesda, MD 20894  
National Institutes of Health, Department of Health & Human Services  
Copyright, Privacy, Accessibility  
Freedom of Information Act (FOIA)



# NLM Technical Bulletin

National Library of Medicine | National Institutes of Health

[Table of Contents](#)

[RSS](#)

[Home](#)

[Back Issues](#)

[Indexes](#)

2010 JULY–AUGUST

No. 375

July 23, 2010 [posted]

## Meeting Abstracts Added to the NLM Gateway

On June 29, 2010, meeting abstracts from the 16th International Conference on AIDS (held in Toronto, Canada, in 2006) were added to the NLM Gateway Meeting Abstracts collection.

The abstracts can be quickly retrieved by searching the title abbreviation:

aids 2006 [ta]

---

*Meeting Abstracts Added to the NLM Gateway. NLM Tech Bull. 2010 Jul-Aug;(375):e6.*

[PREVIOUS](#)

2010 JULY–AUGUST

No. 375

[Stay Current](#) 

[Home](#)

[Back Issues](#)

[Indexes](#)

U.S. National Library of Medicine, 8600 Rockville Pike, Bethesda, MD 20894  
National Institutes of Health, Department of Health & Human Services  
Copyright, Privacy, Accessibility  
Freedom of Information Act (FOIA)



July 27, 2010 [posted]

## NLM<sup>®</sup> Technical Bulletin E-mail Subscription Service

Beginning on July 26, 2010, the NLM is pleased to offer a new e-mail subscription service that allows you to receive a once daily e-mail alert if a new article is published or an existing article is updated in the *NLM Technical Bulletin*.

Note: You will receive only one e-mail on that day regardless of how many articles are published or updated.

Ways to stay current:

- **E-mail Alerts**

Sign up to receive a once daily e-mail alert if an article is published or updated.

- **NLM Announces**

Join the NLM-Announces e-mail list to receive a weekly notification of new or recently added content on the NLM Web site including *NLM Technical Bulletin* articles.

- **RSS**

Subscribe to the *NLM Technical Bulletin* or NLM Web site RSS feeds.

All of these services are listed on the Stay Current page accessible from the *NLM Technical Bulletin* homepage (see Figure 1) and from the footer of every article page where you see the e-mail and RSS icons (see Figure 2).

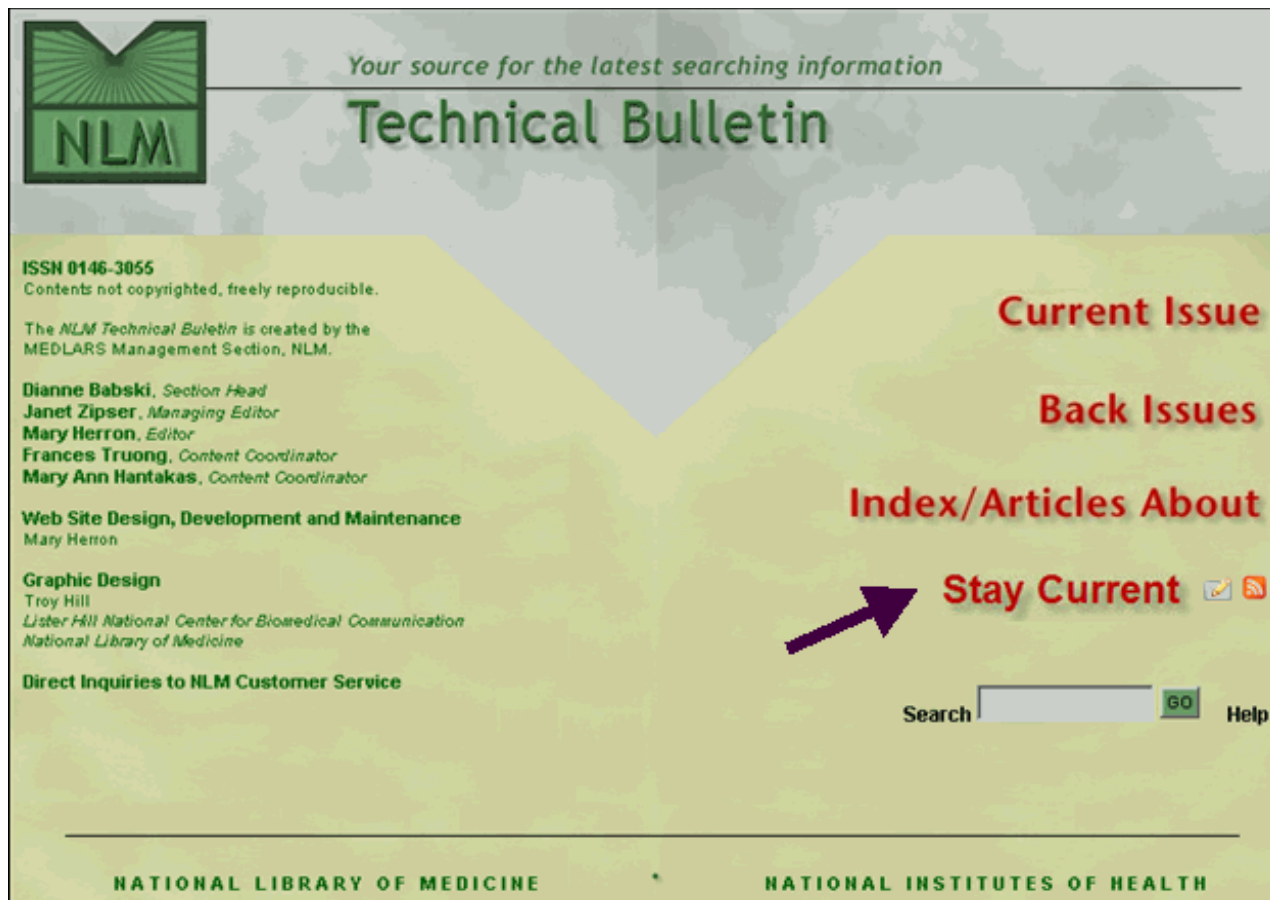


Figure 1: NLM Technical Bulletin homepage with Stay Current link to sign up for e-mail subscription service, NLM-Announces, and RSS.

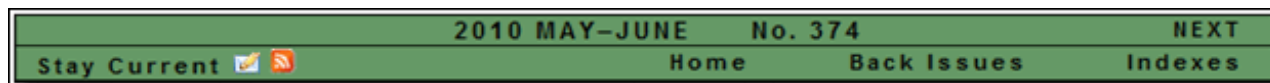


Figure 2: NLM Technical Bulletin footer with Stay Current link to sign up for e-mail subscription service, NLM-Announces, and RSS.

NLM® Technical Bulletin E-mail Subscription Service. *NLM Tech Bull.* 2010 Jul-Aug;(375):e7.



U.S. National Library of Medicine, 8600 Rockville Pike, Bethesda, MD 20894  
 National Institutes of Health, Department of Health & Human Services  
 Copyright, Privacy, Accessibility  
 Freedom of Information Act (FOIA)





# NLM Technical Bulletin

National Library of Medicine | National Institutes of Health

[Table of Contents](#)

[RSS](#)

[Home](#)

[Back Issues](#)

[Indexes](#)

2010 JULY–AUGUST

No. 375

July 27, 2010 [posted]

## NLM® Household Products Database Now Includes 10,000 Brand Name Products

*[Editor's Note: This is a reprint of an announcement published on NLM-Tox-Enviro-Health-L, an e-mail announcement list available from the NLM Division of Specialized Information Services. To subscribe to this list, please see the NLM-TOX-ENVIRO-HEALTH-L Join, Leave, or Change Options page.]*

The National Library of Medicine® (NLM) Household Products Database has been updated and now includes 10,000 brand name products, 3,214 ingredients, and 395 manufacturers.

In addition, 4,111 products are now linked to the complete Material Safety Data Sheet (MSDS).

The Household Products Database is a consumer guide that provides information on the potential health effects of chemicals contained in more than 10,000 common household products used inside and around the home. This resource helps scientists and consumers learn about ingredients in brand-name products.

---

*NLM® Household Products Database Now Includes 10,000 Brand Name Products. NLM Tech Bull. 2010 Jul-Aug;(375):e8.*

2010 JULY–AUGUST

No. 375

[Stay Current](#) 

[Home](#)

[Back Issues](#)

[Indexes](#)

U.S. National Library of Medicine, 8600 Rockville Pike, Bethesda, MD 20894  
National Institutes of Health, Department of Health & Human Services  
Copyright, Privacy, Accessibility  
Freedom of Information Act (FOIA)



July 29, 2010 [posted]

## Unified Medical Language System® (UMLS®) News: Revised License Agreement, New UMLS Terminology Services and Browser, Discontinued UMLSKS, and API Changes

NLM® is working to improve access to UMLS resources. This Fall several major changes will take place that will affect all UMLS licensees.

This is the first announcement regarding the forthcoming changes. Additional announcements will be sent as the changes are implemented, and then licensees will need to take action in order to retain access to UMLS resources. You do not need to take any action at this time; we will notify licensees when the new license request interface is available.

### License Interface and License Agreement Changes

**As part of the planned upgrades, current licensees will be required to request a new UMLS Metathesaurus® License using the new license request interface. The license will include changes to the SNOMED CT® Affiliate License Agreement (Appendix 2).**

During the new license request process, users will be required to create a Username and Password. A new UMLS profile will be established that will allow single sign-on access to UMLS downloads and other resources. Licensees will receive a new license code upon approval of the license request.

There will be a 30-day grace period for licensees to access UMLS resources under their existing (old) license, after which licenses will be deactivated and access to the UMLS with these license codes will no longer be granted. Licensees must transition to the new license code granted under the new license request interface.

Additionally, licensees will see changes to the SNOMED CT Affiliate License Agreement (Appendix 2) that include license fee exemptions for SNOMED CT users in low-income countries. The changes will be detailed in forthcoming announcements.

### UMLS Terminology Services and Browser

The UMLS Knowledge Source Server (UMLSKS), which provides Web access to the Knowledge Sources, will be retired in the Fall. Its features will be incorporated into the new UMLS Terminology Browser, as part of the new UMLS Terminology Services (UTS).

The UTS will provide stable online access to users' UMLS profiles, the UMLS Terminology Browser, and UMLS downloads.

Your new UMLS profile will provide single sign-on access to all UMLS resources (browsers, file downloads, reporting tools, and profile management). Users will be able to manage profile features such as:

- Editing contact information
- Adding, removing, and viewing all user accounts associated with a license code
- Requesting or cancelling releases on DVD

The new UMLS Terminology Browser will incorporate updated versions of these browsers from the UMLSKS:

- Metathesaurus Browser
- Semantic Network Browser
- Tree Browser

It will also include a new browser, the SNOMED CT Browser. The SNOMED CT Browser will enable users to search for and display SNOMED CT content, as included in the UMLS Metathesaurus. The search mechanism will use UMLS data and tools to enhance the retrieval.

All UMLS file downloads will be available through the UTS. Username and Password will be required to download UMLS files (UMLS Release, RxNorm weekly and monthly releases, SNOMED CT International and Spanish releases, etc.).

### **UMLSKS Access**

Users will have access to the legacy UMLSKS Version 6.0 (with current Login ID and Password) during the 30-day grace period for obtaining a new license code through the new license request interface. Users will not be able to create new UMLSKS accounts during this time. After the 30-day grace period, users must access UMLS resources through the UTS with the Username and Password created during the re-licensing process.

### **API Changes**

The current UMLSKS Web Services API will continue to be supported with no change in the Web Services Description Language (WSDL), with the following exceptions.

The following methods will not be available in the UTS API:

- RowGroup query(XMLQueryRequest request)
- String getRawRecords(RawRecordsRequest request)
- listDictionaries(DictionaryRequest request)

The following classes will require certain identifiers as input parameters upon construction:

- MapRequest - must specify the MapSetCui with setMapSetCUI(String MapSetCUI)
- MeSHEntryRequest - must specify CUI with setCUI(String s) or Term with setTerm(String s)
- MeSHInfoRequest - must specify DUI with setDUI(String s)
- SemTypeSiblingRequest - must specify NetworkName with setNetworkName(String s)
- describeChanges - must specify umlsReleases with setUMLSReleases(String[]) or CUIs with setCUIs(String[])

- HierRelRelExistsRequest - must specify LName, Relation, and RName with setLName(String), setRelation(String) and setRName(String)
- SourceHistoryRequest - must specify CUI and one of SAB with SetSAB(String) or SourceUI with setSourceUI(String)

A new Web Services API is in development and will be available for use in the future.

**The UMLSKS Version 5.0 Socket Server and RMI will no longer be available once the UTS system is implemented.**

### Upcoming Webcasts

Webcasts on these new services will be provided when the new license request interface and UTS launch, and will cover:

- New UMLS profile and adding authorized users
- Overview and demonstration of new UMLS Terminology Browser including Metathesaurus, Semantic Network, and Tree Browsers
- Overview and demonstration of SNOMED CT Browser

Questions should be sent to NLM Customer Service with the subject line "UMLS Upgrades."

---

*Unified Medical Language System® (UMLS®) News: Revised License Agreement, New UMLS Terminology Services and Browser, Discontinued UMLSKS, and API Changes. NLM Tech Bull. 2010 Jul-Aug;(375):e9.*

2010 JULY–AUGUST		No. 375	
<a href="#">Stay Current</a> 	<a href="#">Home</a>	<a href="#">Back Issues</a>	<a href="#">Indexes</a>

U.S. National Library of Medicine, 8600 Rockville Pike, Bethesda, MD 20894  
 National Institutes of Health, Department of Health & Human Services  
 Copyright, Privacy, Accessibility  
 Freedom of Information Act (FOIA)



# NLM Technical Bulletin

National Library of Medicine | National Institutes of Health

[Table of Contents](#)

[RSS](#)

[Home](#)

[Back Issues](#)

[Indexes](#)

2010 JULY–AUGUST

No. 375

August 05, 2010 [posted]

## NLM<sup>®</sup> Resource Update: WISER<sup>®</sup> for BlackBerry

*[Editor's Note: This is a reprint of an announcement published on NLM-Tox-Enviro-Health-L, an e-mail announcement list available from the NLM Division of Specialized Information Services. To subscribe to this list, please see the NLM-TOX-ENVIRO-HEALTH-L Join, Leave, or Change Options page.]*

The National Library of Medicine<sup>®</sup> (NLM) WISER (Wireless Information System for Emergency Responders) has released WISER for BlackBerry.

This release features:

- Quick online access to WISER full database of chemical, biological, and radiological substances
- Easy access to WISER help identify capability and full suite of tools

WISER for BlackBerry can be downloaded from the WISER Web site. Please note that WISER for BlackBerry requires an active Internet connection.

Coming soon to WISER:

- WISER 4.4, with data updates to all platforms and the new chemical reactivity feature to the WISER for Windows platform
- Updates and enhancements to WISER for iPhone/iPod touch

---

*NLM<sup>®</sup> Resource Update: WISER<sup>®</sup> for BlackBerry. NLM Tech Bull. 2010 Jul-Aug;(375):e10*

[PREVIOUS](#)

2010 JULY–AUGUST

No. 375

[Stay Current](#) 

[Home](#)

[Back Issues](#)

[Indexes](#)

U.S. National Library of Medicine, 8600 Rockville Pike, Bethesda, MD 20894  
National Institutes of Health, Department of Health & Human Services  
Copyright, Privacy, Accessibility  
Freedom of Information Act (FOIA)



August 06, 2010 [posted]

August 16, 2010 [Editor's note added]

## Structured Abstracts: A New Look for the PubMed® Abstract Display

*[Editor's Note added August 16, 2010: These changes were implemented in PubMed on August 16, 2010.]*

Nearly a quarter of all abstracts currently added to MEDLINE® include section labels such as BACKGROUND, OBJECTIVE, METHODS, RESULTS, and CONCLUSIONS. These abstracts, known as structured abstracts, will soon be reformatted for easier readability. Section labels will remain in uppercase followed by a colon, but will be bolded and each section will begin on a new line (seeFigure 1).

---

[J Endocrinol Invest. 2005 Nov;28\(10\):928-34.](#)

## **Plasma total homocysteine level and its association with carotid intima-media thickness in obesity.**

[Uysal O, Arikan E, Cakir B.](#)

Internal Medicine, Medical Faculty, Trakya University, Edirne, Turkey.

Comment in:

[J Endocrinol Invest. 2006 Jun;29\(6\):573-4.](#)

### **Abstract**

**BACKGROUND:** Elevated plasma concentrations of total homocysteine (tHcy) and obesity are risk factors for cardiovascular disease. The relationship between hyperhomocysteinemia and obesity has not been totally elucidated.

**OBJECTIVE:** The first aim of the study was to investigate whether anthropometric measurements and insulin resistance contribute to the variation in homocysteine levels in obese adults. Our second aim was to determine if any relationship exists between the carotid intima-media thickness (IMT) and plasma tHcy levels in obese subjects without traditional cardiovascular risk factors.

**MATERIAL AND METHODS:** Fifty-five obese (15 male, 40 female) and 30 (11 male, 19 female) age- and sex-matched apparently healthy volunteers were included. Exclusion criteria were smoking, hypertension, diabetes, vitamin ingestion, hyperlipidemia, renal failure, liver disease, pregnancy, menopause and secondary obesity such as Cushing's syndrome, hypothyroidism. tHcy, folate, vitamin B12 levels, fasting insulin, glucose, total cholesterol, triglycerides, HDL, LDL particles, uric acid, creatinine and creatinine clearance were measured. Non-invasive ultrasound measurements of carotid IMT were performed.

**RESULTS:** tHcy levels and carotid IMT were comparable between obese and non-obese subjects. Waist/hip ratio (WHR) was related to tHcy and carotid IMT. Hyperhomocysteinemic subjects (tHcy >19.2 micromol/l) had greater WHR than normo-homocysteinemic subjects. Both tHcy levels and carotid IMT were higher in male subjects both in obese and non-obese subjects. No association was observed between insulin resistance and tHcy and carotid IMT. Renal function and abdominal obesity were significant predictors of plasma tHcy levels.

**CONCLUSIONS:** We concluded that, in obese subjects who are free from atherosclerosis and impaired renal function, plasma tHcy levels do not differ from healthy subjects. Plasma tHcy concentrations are not related to carotid IMT in obese subjects during the non-atherogenic stage. Although no significant difference was observed between insulin-resistant and insulin-sensitive subjects compared to the plasma tHcy levels, the relationship between tHcy levels and some components of the insulin resistance syndrome may support the opinion that tHcy may be considered a component of the insulin resistance syndrome.

PMID: 16419496 [PubMed - indexed for MEDLINE]

[+](#) Publication Types, MeSH Terms, Substances

[+](#) LinkOut - more resources

**Figure 1: Reformatted PubMed Structured Abstract.**

This change affects only the PubMed Abstract display using your Internet browser; it will not be available with other display formats, e.g., Abstract (text), and it will not be available using E-Utilities. There is no change for searching at this time.


The NLM® working definition of a structured abstract requires three or more unique section labels of which one must be considered an ending label representing the concept of "results" or "conclusions." Not every uppercase string followed by a colon in an abstract qualifies as a structured abstract label, e.g., DNA:. Hence, all newly-identified uppercase strings followed by a colon will be examined to determine if they qualify as structured abstract labels. This is also necessary as authors and editors continue to create new labels.

NLM is making preparations for PubMed structured abstracts to be segmented as part of our Year-End Processing data dissemination so that licensees of our data can also manipulate the display and searching of structured abstracts. Details are forthcoming.

**By Anna M. Ripple and  
James G. Mork  
Cognitive Science Branch  
Lister Hill National Center for Biomedical Communications  
and  
Lou Wave S. Knecht  
Bibliographic Services Division**

---

*Ripple AM, Mork JG, Knecht LS. Structured Abstracts: A New Look for the PubMed® Abstract Display. NLM Tech Bull. 2010 Jul-Aug;(375):e11.*

<a href="#">PREVIOUS</a>	<a href="#">2010 JULY–AUGUST</a>	<a href="#">No. 375</a>	<a href="#">NEXT</a>
<a href="#">Stay Current </a>	<a href="#">Home</a>	<a href="#">Back Issues</a>	<a href="#">Indexes</a>

U.S. National Library of Medicine, 8600 Rockville Pike, Bethesda, MD 20894  
National Institutes of Health, Department of Health & Human Services  
Copyright, Privacy, Accessibility  
Freedom of Information Act (FOIA)





# NLM Technical Bulletin

National Library of Medicine | National Institutes of Health

[Table of Contents](#)

[RSS](#)

[Home](#)

[Back Issues](#)

[Indexes](#)

2010 JULY–AUGUST

No. 375

August 09, 2010 [posted]

## NLM® Resource Update: TOXMAP® Now Includes Updated Superfund, Mortality Data, and New Classroom Exercises

*[Editor's Note: This is a reprint of an announcement published on NLM-Tox-Enviro-Health-L, an e-mail announcement list available from the NLM Division of Specialized Information Services. To subscribe to this list, please see the NLM-TOX-ENVIRO-HEALTH-L Join, Leave, or Change Options page.]*

The National Library of Medicine® TOXMAP now includes updated EPA Superfund National Priority List (NPL) data and updated NCI mortality data.

In addition, TOXMAP now provides links to AirNow for air quality data, to NCEA (National Center for Environmental Assessment) HERO (Health & Environmental Research Online) Database for risk assessments, and additional TOXMAP classroom exercises.

TOXMAP is a Geographic Information System (GIS) from the Division of Specialized Information Services (SIS) of the US National Library of Medicine (NLM) that uses maps of the United States to help users visually explore data from the US Environmental Protection Agency (EPA), Toxics Release Inventory, and Superfund Program.

---

*NLM® Resource Update: TOXMAP® Now Includes Updated Superfund, Mortality Data, and New Classroom Exercises. NLM Tech Bull. 2010 Jul-Aug;(375):e12*

2010 JULY–AUGUST

No. 375

[Stay Current](#) 

[Home](#)

[Back Issues](#)

[Indexes](#)

U.S. National Library of Medicine, 8600 Rockville Pike, Bethesda, MD 20894  
National Institutes of Health, Department of Health & Human Services  
Copyright, Privacy, Accessibility  
Freedom of Information Act (FOIA)



August 25, 2010 [posted]

## MEDLINE® Character Set Expansion

Since the inception of MEDLINE, NLM® has limited the characters used to those typed from a standard US keyboard and a small set of frequently used diacritics (see this character set at Limited MEDLINE®/PubMed® Character Set).

Starting in early September 2010, NLM will accept for newly created MEDLINE records any UTF-8 character in the Latin (Roman) and Greek scripts as well as mathematical and other symbols commonly found in biomedical literature. Other scripts such as Chinese, Japanese, or Korean are not supported (see MEDLINE®/PubMed® Character Set for the expanded character set).

The most notable difference is the addition of Greek characters to the database. Previously, NLM spelled out Greek letters, for example, replacing β (Unicode 03B2) with beta. PubMed users are now able to search for these characters either by copying and pasting the text from an online source or by spelling out the letter as they always have done. Both approaches retrieve the same set of citations.

NLM will continue to standardize some characters:

- All instances that represent a Double Quote will be translated to the straight double quote " (Unicode 0022).
- All instances that represent a Single Quote (this includes prime and apostrophe) will be translated to the straight single quote ' (Unicode 0027).
- Em Dash, En Dash, Hyphen, or Minus will be translated to the single dash - (Unicode 002D).

See *Diacritics in PubMed® Displays and Searching* for additional information.

**By J. Shore**  
**Index Section**

*Shore J. MEDLINE® Character Set Expansion. NLM Tech Bull. 2010 Jul-Aug;(375):e13.*